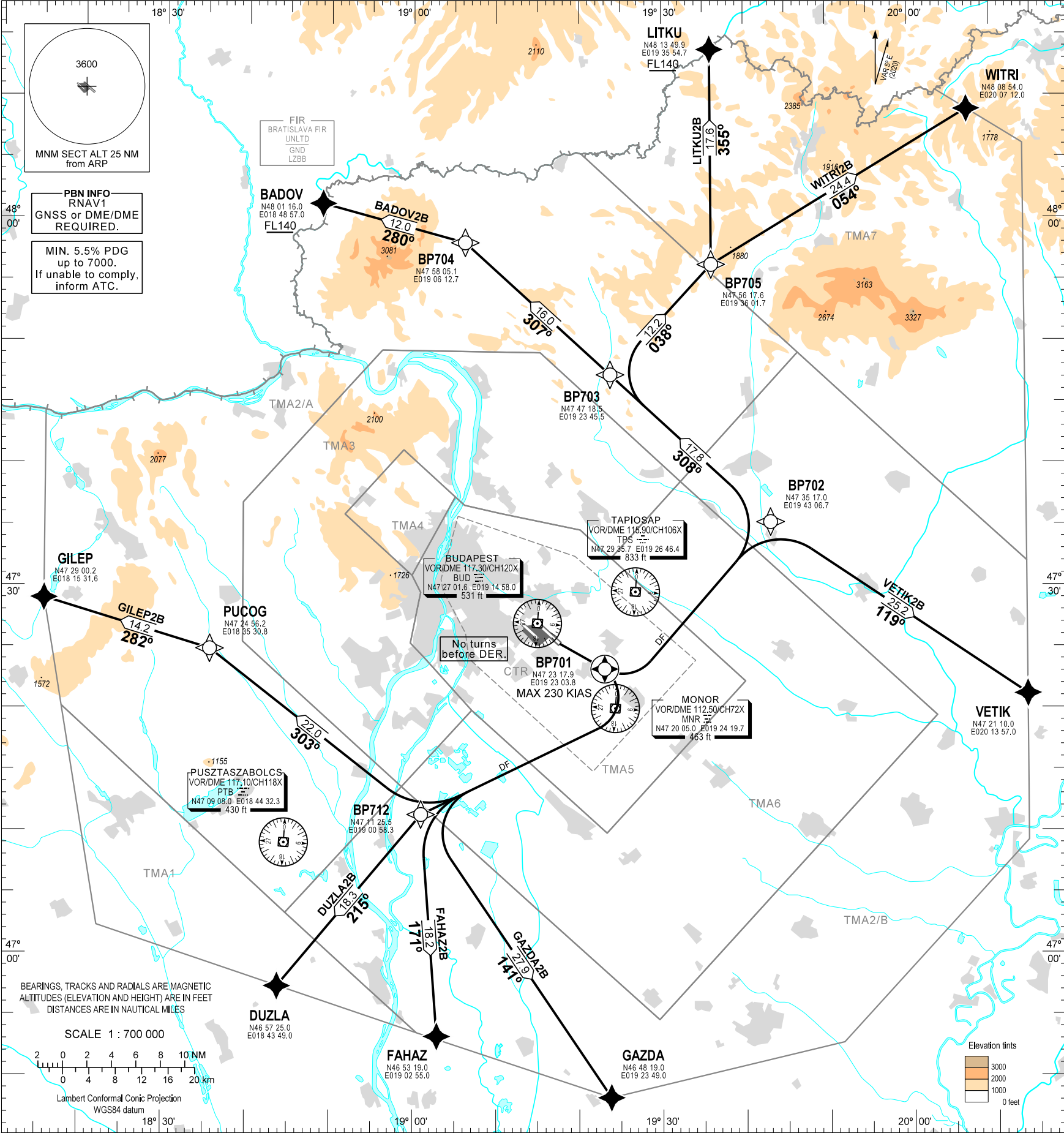


STANDARD DEPARTURE CHART -
INSTRUMENT (SID) - ICAO

TRANSITION ALTITUDE
10000

BUDAPEST APP 122.980 123.860 BUDAPEST GROUND 121.905
119.510 BUDAPEST DELIVERY 134.540
BUDAPEST TOWER 118.715 ATIS 132.380 (117.300)
BUDAPEST INFORMATION (NORTH) 119.350, (NORTH-EAST) 134.855

BUDAPEST/LISZT FERENC
RNAV RWY 13L
BADOV2B, DUZLA2B, FAHAZ2B, GAZDA2B
GILEP2B, WITRI2B, LITKU2B, VETIK2B



An aeroplane should not be diverted from its assigned route unless:
it is necessary for the safety of the aeroplane (e.g. for avoidance of severe weather or to resolve a traffic conflict).

CLIMBING:
Min. 5.5% PDG up to 7000. If unable to comply, inform ATC. After departure climb initially 7000. Further climb only by ATC.

CONTACT:
If pilot not otherwise instructed by Budapest TWR, all departing aircraft, irrespective of the assigned SID, when passing 3000, shall contact Budapest APP on 122.980 CH.

R/T FAILURE:
If a departing controlled aircraft having acknowledged an initial (eg. 7000) or intermediate clearance, to climb to a level other than the one specified in the filed FPL for the en-route phase of the flight and no time or geographical limit was included in the clearance, should maintain for a period of seven minutes the level (eg. 7000) to which it was cleared and then should climb to the level included in the filed FPL unless the cruising level was definitely specified in the en-route clearance.

SID NAME	PROCEDURE	RESTRICTIONS
VETIK2B (VETIK TWO BRAVO DEPARTURE)	To BP701 climb on course 114°, no turns before DER. Direct to BP702. To VETIK.	MAX 230 KIAS at BP701.
WITRI2B (WITRI TWO BRAVO DEPARTURE)	To BP701 climb on course 114°, no turns before DER. Direct to BP702. To BP703, to BP705, to WITRI.	
LITKU2B (LITKU TWO BRAVO DEPARTURE)	To BP701 climb on course 114°, no turns before DER. Direct to BP702. To BP703, to BP705, to LITKU at or above FL140.	
BADOV2B (BADOV TWO BRAVO DEPARTURE)	To BP701 climb on course 114°, no turns before DER. Direct to BP702. To BP703, to BP704, to BADOV at or above FL140.	
GILEP2B (GILEP TWO BRAVO DEPARTURE)	To BP701 climb on course 114°, no turns before DER. Direct to BP712. To PUCOG, to GILEP.	
DUZLA2B (DUZLA TWO BRAVO DEPARTURE)	To BP701 climb on course 114°, no turns before DER. Direct to BP712. To DUZLA.	
FAHAZ2B (FAHAZ TWO BRAVO DEPARTURE)	To BP701 climb on course 114°, no turns before DER. Direct to BP712. To FAHAZ.	
GAZDA2B (GAZDA TWO BRAVO DEPARTURE)	To BP701 climb on course 114°, no turns before DER. Direct to BP712. To GAZDA.	

Recommended navaid: BUD VOR.

BUDAPEST TMA						BUDAPEST CTR	
TMA1	<div><div>C</div><div>TMA BUDAPEST TMA1 FL195 9500</div></div>	TMA3	<div><div>C</div><div>TMA BUDAPEST TMA3 FL195 3500</div></div>	TMA6	<div><div>C</div><div>TMA BUDAPEST TMA6 FL195 2500</div></div>	CTR	<div><div>D</div><div>CTA BUDAPEST CTR 3500 GND</div></div>
TMA2/A	<div><div>C</div><div>TMA BUDAPEST TMA2/A FL195 5500</div></div>	TMA4	<div><div>C</div><div>TMA BUDAPEST TMA4 FL195 2500</div></div>	TMA7	<div><div>C</div><div>TMA BUDAPEST TMA7 FL195 9500</div></div>		
TMA2/B	<div><div>C</div><div>TMA BUDAPEST TMA2/B FL195 5500</div></div>	TMA5	<div><div>C</div><div>TMA BUDAPEST TMA5 FL195 2000</div></div>				

THIS PAGE IS INTENTIONALLY LEFT BLANK